

Valid for ball bearing EasyIn MM10035707



Read the installation instructions for the units and observe the safety information.

The target group for this installation manual is trained qualified personnel entrusted with the technical functioning and operation of the unit.

Information

When converting to another type, all four ball bearings must be replaced.

INFORMATION

The ball bearings mounted on the tray trolley must be of the same type.

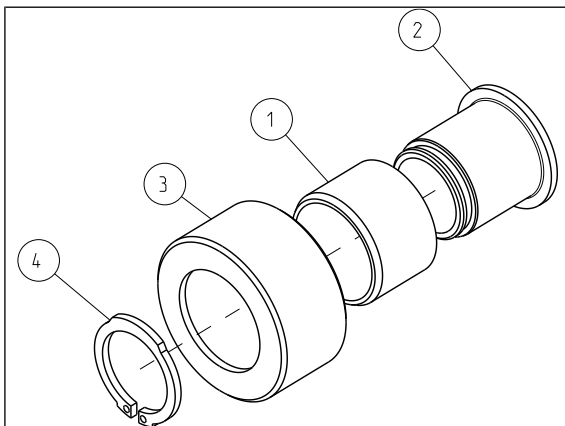
Safety

Organizational measures

Risk of property damage and personal injury from lack of organizational measures

- Use equipment and protective gear suitable for the activity.

Overview



- | | |
|-----------------|-----------|
| 1 Plain bearing | 2 Bushing |
| 3 Roll, 22mm | 4 Circlip |

Position 1 and 3 are already pre-assembled.

Disassemble ball bearing

- Pull off existing ball bearings. The fan wheel puller from SpaceCombi is suitable for this purpose.
- Clean the axle with a damp cloth. Do not use chemicals or lubricants.

Heat bushings

INFORMATION

The bushings must be heated before assembly. The heated bushings must be mounted immediately.

- Heat bushings to at least 100°C (212°F) in combisteamer.
- Remove the bushings with pliers. Use suitable gloves when doing so.

Mount bushings

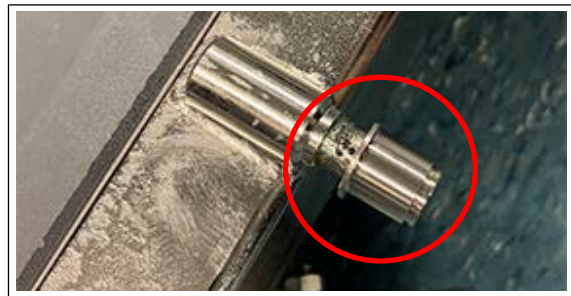


Image: Position socket

- Quickly place the heated bushing on the axle of the tray trolley.



Image: Tap bushing with rubber mallet

- Use a soft-face hammer to fully open the bushing.

Mount roller and circlip



Image: Mounting snap ring



Image: Final assembly

→ Place the roller on the axle with the bushing mounted.

INFORMATION

The closed side of the roll must face outwards.

→ Mount circlip with snap ring pliers. Do not bend the circlip too far open. Engaging in the groove can usually be heard via a "clicking noise". If necessary, press retaining ring into the groove with a screwdriver.

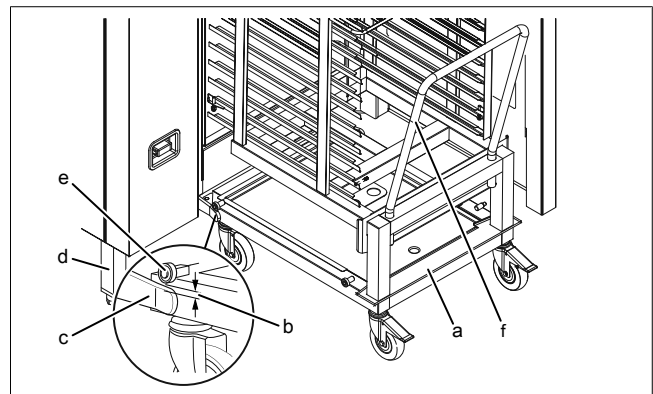
↳ Finally, check the assembly of all components.

Check alignment of combisteamer

Finally, check the alignment of the combisteamer and adjust if necessary.

1. Level the unit by screwing the equipment legs in or out.
2. Open the cooking chamber door.
3. Place the tray trolley against the guide rails.
4. Screw the unit legs in or out until the support rollers are 1 mm to 5 mm above the support rails.
5. Retract the tray trolley.
6. Level the guide rails.
7. Move tray trolley into the unit until it stops and check the alignment.

↳ The support rollers of the inserted tray trolley no longer have floor contact.



a Tray trolley
b Distance
c Guide rail

d Unit leg
e Support roller
f Handle bar